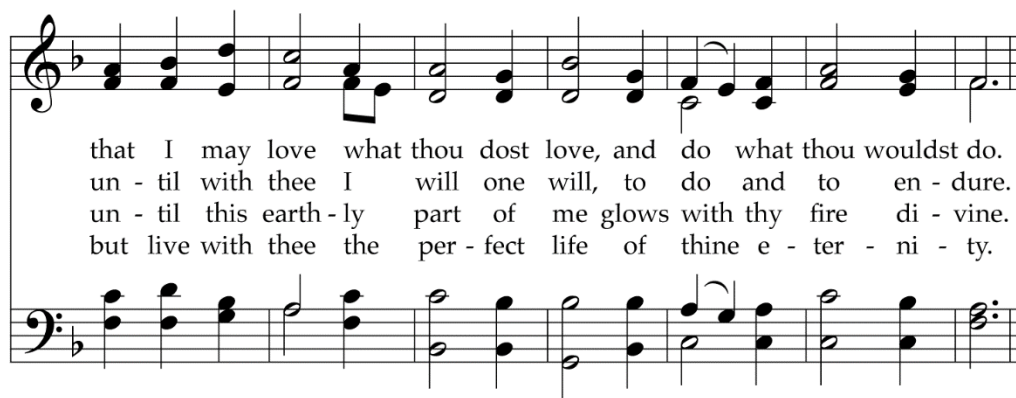


Breathe on Me, Breath of God 286



1 Breathe on me, Breath of God; fill me with life a - new,
2 Breathe on me, Breath of God, un - til my heart is pure,
3 Breathe on me, Breath of God, till I am whol - ly thine,
4 Breathe on me, Breath of God, so shall I nev - er die,



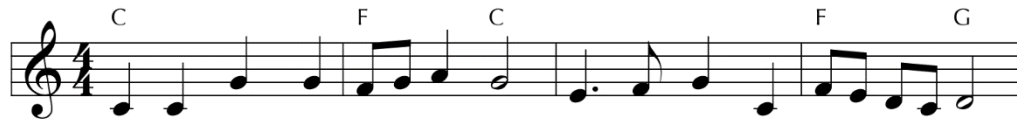
that I may love what thou dost love, and do what thou wouldst do.
un - til with thee I will one will, to do and to en - dure.
un - til this earth - ly part of me glows with thy fire di - vine.
but live with thee the per - fect life of thine e - ter - ni - ty.

In both Hebrew and Greek, the words for "spirit" can equally well be translated as "breath" or "wind," so it is very appropriate to address the Holy Spirit as the "Breath of God." This tune by an English organist has become the customary one in North American hymnals.

TEXT: Edwin Hatch, 1878
MUSIC: Robert Jackson, 1888

TRENTHAM
SM

God of Great and God of Small 19



1 God of great and God of small, God of one and God of all,
 2 God of land and sky and sea, God of life and des - ti - ny,
 3 God of si - lence, God of sound, God by whom the lost are found,
 4 God of heaven and God of earth, God of death and God of birth,



God of weak and God of strong, God to whom all things be - long,
 God of nev - er - end - ing power, yet be - side me ev - ery hour,
 God of day and dark - est night, God whose love turns wrong to right,
 God of now and days be - fore, God who reigns for - ev - er - more,

Refrain



al - le - lu - ia, al - le - lu - ia, praise be to your name.

Although it uses remarkably simple language, this text affirms a great mystery: beyond all our powers of explanation, God holds together all the opposites that seem to pull us in one direction or another. Yet God is present to them all and also to us; for that we give praise.

TEXT: Natalie Sleeth, 1973
 MUSIC: Natalie Sleeth, 1973; arr. Beverly A. Howard, 2012
 Text and Music © 1973 Carl Fischer, Inc.

GOD OF GREAT AND SMALL
 7.7.7.7 with refrain

301 Let Us Build a House

All Are Welcome

Capo 3: (A7) (D) (A) (D) (G) (A) (Bm)
 C7 F C F B^b C Dm

1 Let us build a house where love can dwell and all can
 2 Let us build a house where proph - ets speak, and words are
 3 Let us build a house where love is found in wa - ter,
 4 Let us build a house where hands will reach be - yond the
 5 Let us build a house where all are named, their songs and

(D) (A) (D) (Bm7) (Em) (A)
 F C F Dm7 Gm C

safe - ly live, a place where saints and chil - dren tell
 strong and true, where all God's chil - dren dare to seek
 wine, and wheat; a ban - quet hall on ho - ly ground
 wood and stone to heal and strength-en, serve and teach,
 vi - sions heard and loved and trea - sured, taught and claimed

(Em) (A7) (G) (D) (F#m) (Bm)
 Gm C7 B^b F Am Dm

how hearts learn to for - give. Built of hopes and dreams and
 to dream God's reign a - new. Here the cross shall stand as
 where peace and jus - tice meet. Here the love of God, through
 and live the Word they've known. Here the out - cast and the
 as words with - in the Word. Built of tears and cries and

(Em) (A) (D) (G)
 Gm C F B^b

vi - sions, rock of faith and vault of grace; here the
 wit - ness and as sym - bol of God's grace; here as
 Je - sus, is re - vealed in time and space; as we
 strang - er bear the im - age of God's face; let us
 laugh - ter, prayers of faith and songs of grace; let this

Although it was written for a church dedication, this text is not about a physical structure but a spiritual one. The building is at best only a vessel for the essential love and hope, life and faith, peace and justice, hospitality and nurture that form the worshipping community.

THE CHURCH

Refrain

(D) (G) (F#7) (Bm) (Em) (Bm)
 F B \flat A7 Dm Gm Dm

love of Christ shall end di - vi - sions:
 one we claim the faith of Je - sus:
 share in Christ the feast that frees us: all are wel - come;
 bring an end to fear and dan - ger:
 house pro-claim from floor to raf - ter:

(F#m) (Em) (D) (Em) (A7) (D) (G) (D)
 Am Gm F Gm C7 F B \flat F

all are wel - come; all are wel - come in this place.

SENDING

548 May God Support You All Your Days

(Psalm 20)

1 May God sup - port you all your days, in times of
2 May God con - firm your heart's de - sire and bring to
3 May God be near you when you pray, to help you
4 Our hope is in the Ho - ly One. The swift and

glad - ness and in need. May God re - mem - ber you with
full - ness all your plans. May God's sus - tain - ing love in -
with a gen - tle hand. May God for - ev - er guide your
strong will sure - ly fall, but you will stand with God a -

grace and bless your ev - ery word and deed.
spire your shouts of praise and joy - ful dance.
way and lead you to the prom - ised land.
lone, who hears and an - swers when you call.

This text is loosely based on Psalm 20, the first of the psalms for the welfare of the king in battle. This royal psalm is here adapted as a sung blessing and prayer for those setting out on any new venture, making it appropriate for ordinations, weddings, or other such services.

TEXT: David Gambrell, 2009
MUSIC: Lee Hastings Bristol Jr., 1962
Text © 2011 David Gambrell (admin. Presbyterian Publishing Corp.)
Music © 1962 Theodore Presser Co. (admin. Carl Fischer, Inc.)

DICKINSON COLLEGE
LM